

Sanitary partition wall type VITRUM II

Made of enamelled safety glass

schäfer[®]
Trennwandsysteme



Stylish and elegant partitioning.



BEFORE WE
EXPECT TRUST FROM
OUR CUSTOMERS,
WE PROVIDE EVIDENCE
that's us!

TÜV NORD GS TESTED SAFETY *that's us!*

Tested and certified by TÜV NORD these products meet the requirements of the Product Safety Act ProdSG § 21
Registration No. 44 329 14148805



PREQUALIFIED *that's us!*

We are registered in the list of prequalified construction companies with the number 010.049740, proving that we are qualified for the products and services we offer.



For listing >

MADE IN GERMANY *that's us!*

Our products are manufactured for you at the company site in Horhausen, Rhineland-Palatinate. This is the only way we can guarantee the high quality standards we set for our products.



INNOVATIVE & DESIGN-ORIENTED *that's us!*

With our design-oriented and innovative products, we convince not only our customers, but also national and international committees.





Floating elegance.

The Schäfer glass cubicle system VITRUM II. A floating impression is achieved through a recessed head rail and recessed feet. The modern and understated design of the fittings optimally underlines the high-quality character of glass. The 10 mm strong single safety glass, in connection with anodised aluminium fittings, guarantees the highest stability and durability.



(1)



(2)



(3)



(4)

Interesting facts about VITRUM II

Sanitary partition walls made of enamelled safety glass

- Consisting of 10 mm toughened safety glass (ESGH) with Heat-Soak-Test
- Optionally available with soft close function
- Recessed feet and recessed head profile give a floating appearance
- No support feet visible in the front
- Cleaning and maintenance can be carried out more efficiently due to the ground clearance
- High-quality aluminium hardware system
- Very exclusive and highly stable WC partition
- The material glass protects against vandalism due to its surface quality
- Colour selection according to RAL colour chart
- Motif prints optionally possible

(4)

Privacy screens

- Wall hanging construction
- Made of enamelled safety glass (ESG-H)
- Mounting by means of discreet aluminium brackets
- Hygienic and easy to clean
- Waterproof
- Easy floor cleaning due to the construction
- Colour selection according to RAL colour chart
- Motif prints optionally possible
- Privacy screens will be produced acc. to the building site dimension



Interesting facts about VITRUM II

- WC partition walls and glass privacy screens with the same motif print
- For the design of perfectly coordinated room concepts
- Customer-specific motif prints enable unique partition wall designs
- The motif is already printed on the carrier plate during glass production. This gives the glass the same high surface quality as conventional screen printing
- Themed concepts can thus also be perfectly realised in the sanitary area

(2)+(3)

Privacy screens

- Made to measure
- Mounting by means of discreet aluminium brackets
- Wall hanging construction
- The floor clearance enables efficient cleaning

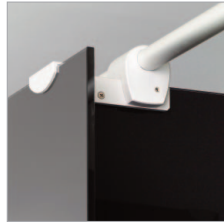
Advantages of glass installations in the sanitary area

- Very high quality due to the nature of the material
- Especially hygienic
- Easy to clean
- Robust and durable
- High resistance to mechanical damage
- Elegant Design
- A perfect impression even after many years of use



Features type VITRUM II

Head rail:



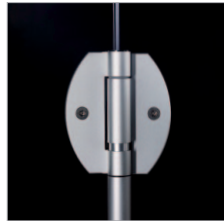
- Upper bracket with recessed head rail
- The front is stabilised with solid aluminium brackets and a stabilising aluminium connector

Supports:



- Lower bracket with recessed aluminium support
- Aluminium bracket and aluminium connector form a very strong connection between the cubicle front and the dividing walls

Hinges:



- Maintenance-free, self-closing hinges with high performance polymer inserts
- Optionally available with soft close function for noiseless door closing

Variation of accessories type VITRUM II

Hardware:



Aluminium
one-hand door knob
INSAFE cubicle outside



Aluminium
one-hand door knob
INSAFE cubicle inside

Buffer and hooks:



Aluminium buffer
Schäfer AL7015



Aluminium hook
Schäfer AL7010

[To the sanitary accessories >](#)

Colours type VITRUM II

The following table shows the available colours for our Vitrum product range. Price group 1 (PG 1) is included in the pricing. The surcharge for price group 2 (PG 2) is available upon request. Other RAL colours, RAL Design colours and NCS colours are available upon request.

| RAL Number | Colour | Price Group |
|------------|----------------------|-------------|
| 1001 | Beige | PG 1 |
| 1002 | Sandgelb | PG 1 |
| 1003 | Signalgelb | PG 1 |
| 1005 | Honiggelb | PG 2 |
| 1007 | Narzissengelb | PG 1 |
| 1013 | Perlweiß | PG 1 |
| 1014 | Elfenbein | PG 1 |
| 1015 | Hellelfenbein | PG 2 |
| 1016 | ähnlich Schwefelgelb | PG 1 |
| 1017 | Safrangelb | PG 1 |
| 1018 | Zinkgelb | PG 1 |
| 1019 | Graubeige | PG 2 |
| 1021 | Rapsgelb | PG 2 |
| 1023 | Verkehrsgelb | PG 1 |
| 1027 | Currygelb | PG 2 |
| 1028 | Melonengelb | PG 2 |
| 1032 | Ginstergelb | PG 1 |
| 1033 | Dahliengelb | PG 1 |
| 1034 | Pastellgelb | PG 2 |
| 1036 | Perlgold | PG 2 |
| 1037 | Sonnengelb | PG 2 |
| 2000 | Gelborange | PG 2 |
| 2001 | Rotorange | PG 2 |
| 2002 | Blutorange | PG 2 |
| 2003 | Pastellorange | PG 2 |
| 2004 | Reinorange | PG 1 |
| 2007 | Leuchthellorange | PG 2 |
| 2008 | Hellorange | PG 2 |
| 2009 | Verkehrsorange | PG 2 |
| 2011 | Tieforange | PG 1 |

| RAL Number | Colour | Price Group |
|------------|-----------------|-------------|
| 2012 | Lachsorange | PG 2 |
| 2013 | Perlorange | PG 2 |
| 3000 | Feuerrot | PG 1 |
| 3001 | Signalrot | PG 2 |
| 3002 | Kaminrot | PG 2 |
| 3003 | Rubinrot | PG 1 |
| 3004 | Purpurrot | PG 2 |
| 3005 | Weinrot | PG 2 |
| 3009 | Oxidrot | PG 2 |
| 3011 | Braunrot | PG 2 |
| 3013 | Tomatenrot | PG 1 |
| 3014 | Altrosa | PG 2 |
| 3016 | Korallenrot | PG 1 |
| 3017 | Rose | PG 1 |
| 3018 | Erdbeerrot | PG 1 |
| 3020 | Verkehrsrot | PG 1 |
| 3022 | Lachsrot | PG 1 |
| 3028 | Reinrot | PG 2 |
| 3031 | Orientrot | PG 2 |
| 4002 | Rotviolett | PG 2 |
| 4004 | Bordeauxviolett | PG 2 |
| 4007 | Purpurviolett | PG 2 |
| 4009 | Pastellviolett | PG 2 |
| 5000 | Violettblau | PG 2 |
| 5002 | Ultramarinblau | PG 2 |
| 5003 | Saphirblau | PG 2 |
| 5005 | Signalblau | PG 2 |
| 5007 | Brillantblau | PG 2 |
| 5009 | Azurblau | PG 2 |
| 5010 | Enzianblau | PG 2 |

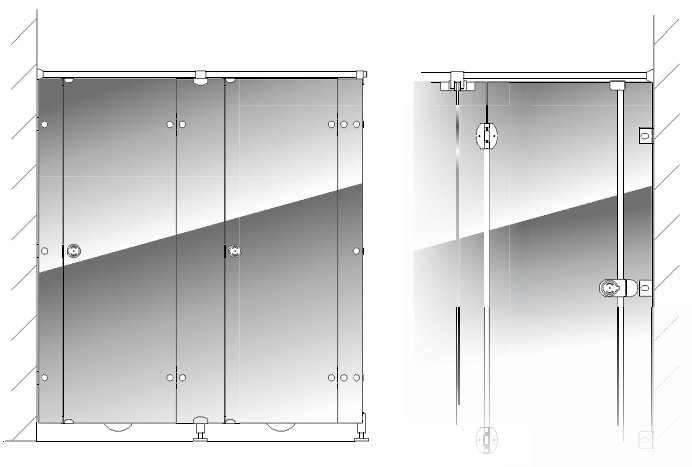
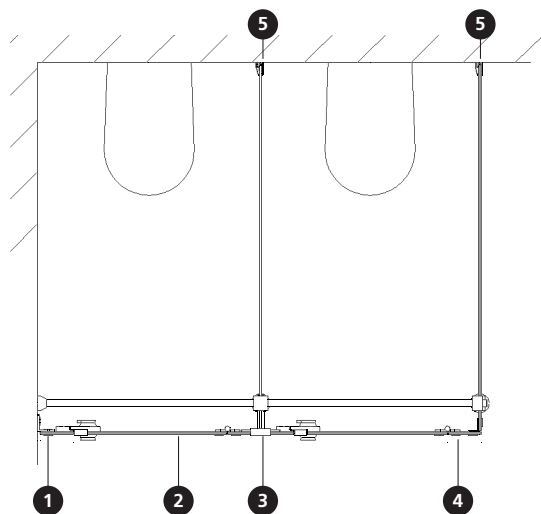
Colours type VITRUM II

The following table shows the available colours for our Vitrum product range. Price group 1 (PG 1) is included in the pricing. The surcharge for price group 2 (PG 2) is available upon request. Other RAL colours, RAL Design colours and NCS colours are available upon request.

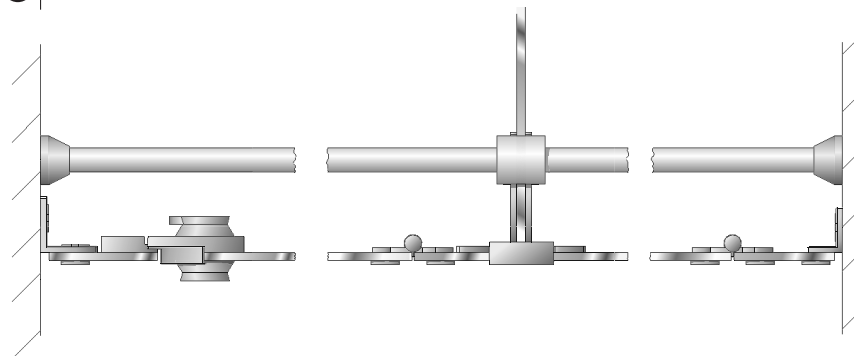
| RAL Number | Colour | Price Group |
|------------|---------------|-------------|
| 5011 | Stahlblau | PG 2 |
| 5012 | Lichtblau | PG 2 |
| 5014 | Taubenblau | PG 1 |
| 5015 | Himmelblau | PG 2 |
| 5017 | Verkehrsblau | PG 2 |
| 5018 | Türkisblau | PG 1 |
| 5019 | Capriblau | PG 2 |
| 5021 | Wasserblau | PG 1 |
| 5022 | Nachtblau | PG 2 |
| 5023 | Fernblau | PG 2 |
| 5024 | Pastellblau | PG 2 |
| 6000 | Patinagrün | PG 1 |
| 6018 | Gelbgrün | PG 1 |
| 6019 | Weißgrün | PG 1 |
| 6024 | Verkehrsgrün | PG 2 |
| 6026 | Opalgrün | PG 1 |
| 6027 | Lichtgrün | PG 1 |
| 6029 | Minzgrün | PG 1 |
| 6032 | Signalgrün | PG 2 |
| 6033 | Minttürkis | PG 1 |
| 6034 | Pastelltürkis | PG 1 |
| 6036 | Perlopalgrün | PG 2 |
| 7001 | Silbergrau | PG 1 |
| 7004 | Signalgrau | PG 1 |
| 7005 | Mausgrau | PG 2 |
| 7006 | Beigegrau | PG 1 |
| 7011 | Eisengrau | PG 1 |
| 7012 | Basaltgrau | PG 1 |
| 7015 | Schiefergrau | PG 2 |
| 7016 | Anthrazitgrau | PG 1 |

| RAL Number | Colour | Price Group |
|------------|------------------|-------------|
| 7021 | Schwarzgrau | PG 2 |
| 7022 | Umbragrau | PG 2 |
| 7023 | Betongrau | PG 2 |
| 7024 | Graphitgrau | PG 2 |
| 7030 | Steingrau | PG 2 |
| 7032 | Kieselgrau | PG 2 |
| 7035 | Lichtgrau | PG 1 |
| 7036 | Platingrau | PG 1 |
| 7037 | Staubgrau | PG 2 |
| 7038 | Achatgrau | PG 1 |
| 7039 | Quarzgrau | PG 2 |
| 7040 | Fenstergrau | PG 1 |
| 7042 | Verkehrsgrau A | PG 1 |
| 7047 | Telegrau 4 | PG 1 |
| 7048 | Perlmausgrau | PG 2 |
| 8003 | Lehmbraun | PG 2 |
| 8004 | Kupferbraun | PG 2 |
| 8007 | Rehbraun | PG 2 |
| 8017 | Schokoladenbraun | PG 2 |
| 8019 | Graubraun | PG 2 |
| 8029 | Perlkupfer | PG 2 |
| 9001 | Cremeweiß | PG 2 |
| 9002 | Grauweiß | PG 1 |
| 9003 | Signalweiß | PG 1 |
| 9005 | Schwarz | PG 1 |
| 9007 | Graualuminium | PG 2 |
| 9010 | Reinweiß | PG 1 |
| 9017 | Verkehrsschwarz | PG 1 |
| 9018 | Papyrusweiß | PG 2 |
| 9022 | Perlhellgrau | PG 2 |

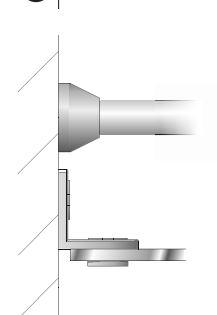
Technical design of cubicle system type VITRUM II



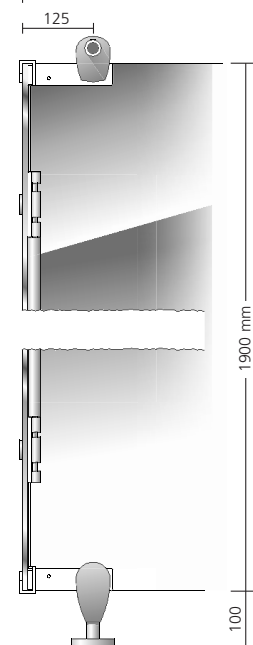
2 Cubicle Front section with one-hand door knob made of aluminium



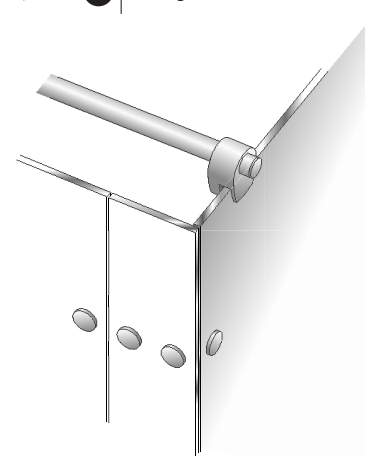
1 Wall connection front



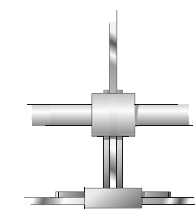
Front height section



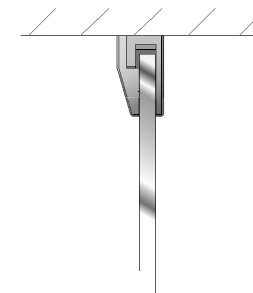
4 Ceiling connection



3 Front to partition wall connection



5 Connection of partition wall to brick wall



We reserve the right to make technical alterations.



reddot winner 2021



Registered at the Germansociety
of pre-qualification for
building companies e.V.
Registration number:
010.049740

Schäfer Trennwandsysteme GmbH, Industriepark 37, D-56593 Horhausen,
Fon: +49 (0)2687/9151-0, Fax: +49 (0)2687/9151-30, info@schaefer-tws.de, www.schaefer-tws.de