

Sanitary partition wall type VK13

Cubicle system made of safety glass

schäfer[®]
Trennwandsysteme



Stylish and elegant partitioning.



BEFORE WE
EXPECT TRUST FROM
OUR CUSTOMERS,
WE PROVIDE EVIDENCE
that's us!

TÜV NORD GS TESTED SAFETY *that's us!*

Tested and certified by TÜV NORD these products meet the requirements of the Product Safety Act ProdSG § 21 Registration No. 44 329 14148811



MADE IN GERMANY *that's us!*

Our products are manufactured for you at the company site in Horhausen, Rhineland-Palatinate. This is the only way we can guarantee the high quality standards we set for our products.



INNOVATIVE & DESIGN-ORIENTED *that's us!*

With our design-oriented and innovative products, we convince not only our customers, but also national and international committees.



PREQUALIFIED *that's us!*

We are registered in the list of prequalified construction companies with the number 010.049740, proving that we are qualified for the products and services we offer.





Toilet partitions made of glass. Durable and very safe.

The material glass creates a special and high-quality ambience in the sanitary room. Furthermore, it is ideally suited when it comes to creating robust, durable and vandalism-proof constructions. Graffiti artists, for example, hardly stand a chance. The good impression is maintained in the long term and costs for expensive repairs and special cleaning are eliminated.



Interesting facts about VK13 Glass

(1) + (2) + (3)

WC partition walls made of safety glass

- Consisting of safety glass (ESG-H) or laminated safety glass (VSG)
- Glass prevents damage from vandalism
- Glass convinces with its high-quality and stylish appearance
- Easy to clean
- Colour selection according to RAL colour chart
- There are different types of glass to choose from
- Customised motif prints optionally available
- Solid and durable construction
- Fully waterproof
- Suitable for wet and dry areas
- System will be produced acc. to the building site dimension

(2) + (4)

Privacy screens made of glass

- Wall hanging construction
- Made of enamelled safety glass (ESG-H)
- Mounting by means of discreet aluminium or stainless steel brackets
- Hygienic and easy to clean
- Waterproof
- Easy floor cleaning due to the construction
- Colour selection according to RAL colour chart
- Motif prints optionally possible
- Privacy screens will be produced acc. to the building site dimension

Features type VK13 Glass

Supports:



- Height-adjustable support foot made of stainless steel
- Complies with DIN 1.4301
- This variant is utilised when powder-coated profiles are used



- Height-adjustable support made of anodised aluminium (E6/EV1)
- This variant is used with the anodised profiles

Hinge:



- Anodised aluminium rising hinge with high-performance polymer
- These inserts guarantee absolute freedom from maintenance and a silence closing of the door
- The parts never wear out or show signs of fatigue, ensuring that the doors still close perfectly even after years of use
- Stainless steel tapping screws are used to screw stainless steel hinges to a plate equipped with tapping holes

Finger protection:



Optionally available:

- Two interlocking aluminium profiles on the hinge side
- Highly effective and durable finger pinch protection
- Integrated self-closing function

Variations of accessories type VK13 Glass

Hardware:



Aluminium one hand
door knob INSAFE



Stainless steel
one hand door knob



Nylon
one hand door knob

Buffer and hooks:



Aluminium buffer
Schäfer AL7015



Stainless steel buffer
Schäfer ES6015



Nylon buffer
Schäfer N8015



Aluminium hook
Schäfer AL7011



Stainless steel hook
Schäfer ES6011



Nylon hook
Schäfer N8010

[To the sanitary accessories >](#)

Colours type VK13 Glass

Profiles:

Special colours for profiles in all RAL colours and special accessories are available upon request. Ask us!



RAL 1023
Verkehrsgeil



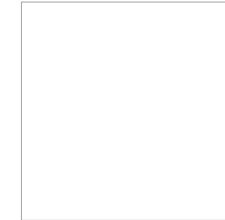
RAL 3003
Rubinrot



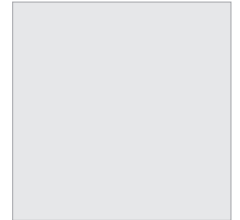
RAL 5002
Ultramarinblau



RAL 7038
Achatgrau



RAL 9010
Reinweil



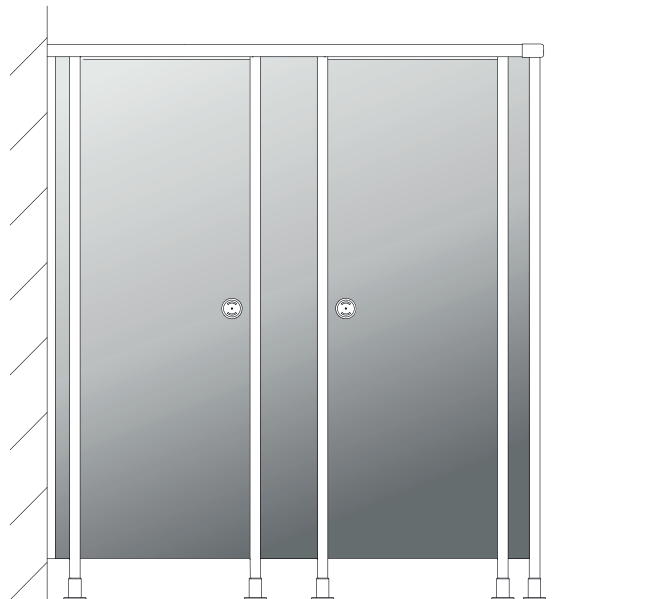
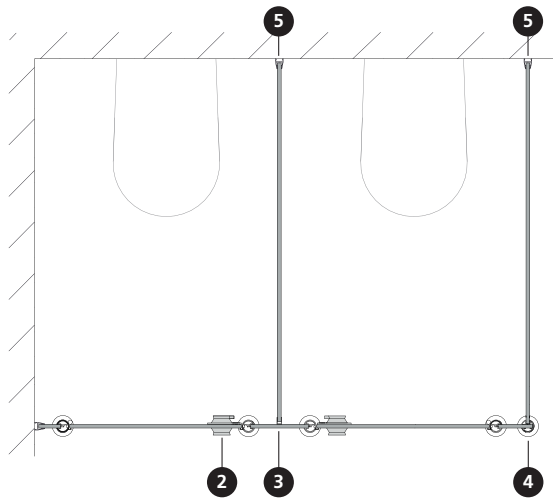
E6/EV1
Eloxiert

Colours of the glass:

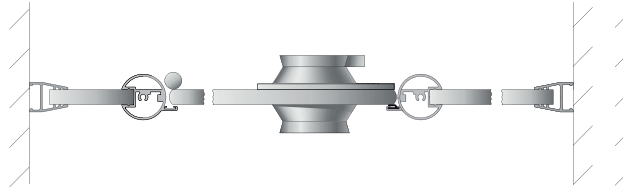
When choosing the colour of the glass decors you have the possibility to fall back on almost the complete RAL palette. **Please contact us with your colour ideas.**

There may be a difference between printed colours and real colours.

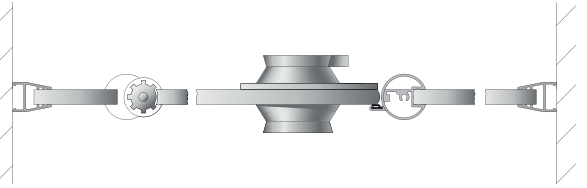
Technical design of cubicle system type VK13 Glass



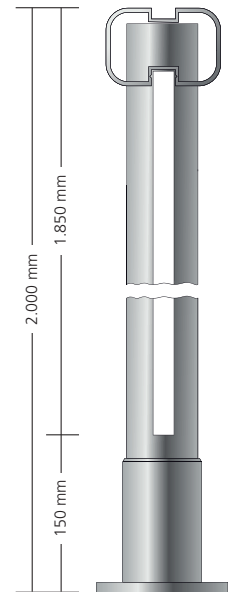
2 Section of the cubicle front, with one hand door knob made from aluminium or stainless steel



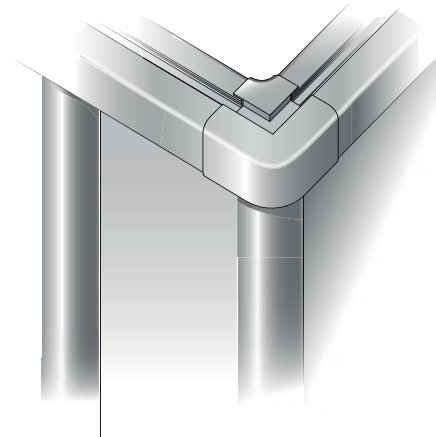
2 Section of the cubicle front, with one hand door knob and aluminium finger-protection hinge as optional



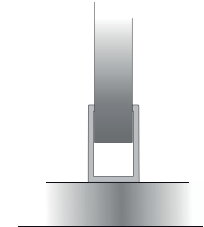
Front height section



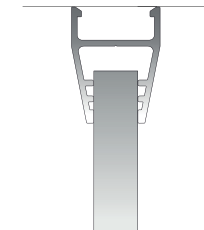
4 Corner connection



3 Front to partition wall connection



5 Wall connection



The continuous vertical profiles are drilled into the head rail to ensure optimum stability.

We reserve the right to make technical alterations.



On request
the products are
available with
FSC™ certification



Registered at the Germansociety
of pre-qualification for
building companies e.V.
Registration number:
010.049740